

Subscribe

Share ▾

Past Issues

Translate ▾

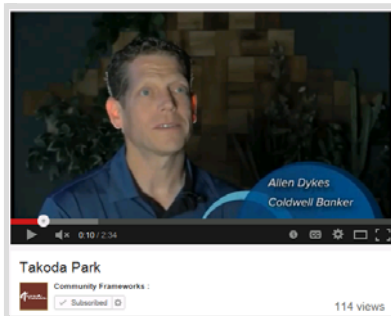
RSS

Welcome to the Holiday edition - Issue 16 - of Community Frameworks' eNewsletters. Enjoy!



## Season's Greetings - Issue 16

Over the past few months, Community Frameworks has developed many affordable homes and educational programs for financial literacy. In this issue is just a taste of what we've been up to. Enjoy!



### Takoda Park - HOMES FOR SALE

Community Frameworks partners with Copper Basin at Takoda Park. Homes available to low-income homeowners in the Spokane area. [Listen](#) as Allen Dykes, Coldwell Banker, depicts the story of how it all came together.

Interested in buying a Takoda Park home or just learning more?  
Call Melody @ 509-484-6733 x122

Watch it Here:  
<https://www.youtube.com/watch?v=rBwLz9J5KLo>

FOLLOW ON TWITTER

FRIEND ON FACEBOOK

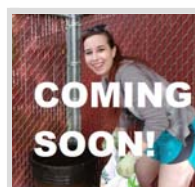
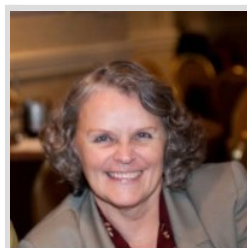
FORWARD TO A FRIEND



### #GivingTuesday

On December 2nd, we kicked off our donation season with [#GivingTuesday](#), a day dedicated to online giving! We honored previous volunteers and donors through social media and they honored us with their contributions! Now, it's your turn to get involved.

Want to join in on the giving fun? [Click Here](#) to see our [Ways to Give](#) page to learn more.



### Creating Affordable Homes Together

Recently, NeighborWorks® Great Falls, (NWGF) partnered with Community Frameworks to build 26 new affordable homes for the growing low-income workforce and senior populations in the Great Falls, Montana area.

The recent economic rise powered by the Bakken oil boom brought an influx of workers, "which creates a huge shortage in housing," says Sheila Rice, Executive Director of NWGF. For the delicate low-income market, this could mean displacement or unaffordability for many people.

Luckily, NWGF is there to soften the blow to the community by building and rehabbing affordable homes in the area using CF's SHOP funds. These homes are sold at affordable prices to families who need them.

**"We probably couldn't be successful in this industry if it weren't for Community Frameworks."** Rice goes on to say.

A humbling statement for all of us here at Community Frameworks, it reminds us of the amplified outcome when two organizations collaborate to achieve one goal.

Without affiliates such as Neighborworks® Great Falls on the ground building homes throughout the Northwest we could not reach the scale to meet the needs of so many people - over 2900 homeowners through CF and its affiliates since the beginning of the SHOP program.

Homeowners invested in their neighborhoods create a better place for everyone living in communities across the Northwest. Stable housing has been shown to increase success in education, health, public safety, and the economy.

Certainly in Great Falls the benefits of affordable housing will reverberate throughout the community for years to come. Congratulations NWGF!

If you are a nonprofit organization who wants to learn how you can use [SHOP funds](#) to build your own affordable homeownership project, [click here](#)



### Stacy, 24, Spokane Volunteer Highlight

Q: Why volunteer with [Community Frameworks](#)?

Stacy: **"The answer is in the name. It's about community."**

**"It's not about any personal gain. It's about giving back and building a better community."**

Read the rest of Stacy's interview showcased in this year's annual report!

Available January 2015. [Click to see past publications](#)



### Bateman Campaign Announcement!

Mark you calendars!!

In February, Community Frameworks is partnering up with the students of [Central Washington University](#) to spread the word on the importance of #AffordableHousing for everyone.

Stay tuned into our social media to get involved and check out the mural we're helping build in Ellensburg, Washington!



### Shop For Good

[AmazonSmile](#) is a fast and easy way to donate while you shop. At no cost to you, Amazon will donate a percentage of all eligible purchases to Community Frameworks when you choose us as your preferred charity.

In just 3 simple steps:

1. [Sign In or Sign Up](#)
2. Select "Community Frameworks" as your preferred charity
3. Start shopping!

**Give the Gift of HOME Today!**

[Click to read](#) how Tesfaye's family moved out of a too-small apartment over a bar in a seedy neighborhood to a beautiful, new house of their own in a lovely neighborhood that is perfect for their young family.

[Follow on Twitter](#) | [Friend on Facebook](#) | [Forward to Friend](#)

Copyright © 2014 Community Frameworks, All rights reserved.

Our Spokane Address  
Community Frameworks  
315 West Mission Avenue  
Suite 100  
Spokane, WA 99201

Possible because we are a



Our Bremerton Address  
Community Frameworks  
409 Pacific Avenue  
Suite 105  
Bremerton, WA 98337

Copyright © 2014 Community Frameworks, All rights reserved.

[update subscription preferences](#)